



1SKB NON SHOCK ROTO RACKS

SKB's Non Shock Roto Racks meet the needs of musicians and pro audio engineers. These Roto Racks include full front and rear covers for easy access, with gasket seals to prevent water from entering into the case and harming your sensitive equipment. Feel safe wherever you are and wherever you go!

These Roto Racks have an exterior design featuring SKB's recognizable bar design that signifies the rack size on the front and rear covers; these bars also provide interlocking capabilities allowing you to easily and securely stack them with SKB's Rolling Roto Racks and Shallow Racks. That makes transporting them even more convenient and secure! Roto Racks also come standard with steel Mil-Spec black twist latches which are recessed for extra durability and longevity, new heavy-duty flush handles, and front and rear rack rails with a rack depth of 17.6".

These models will accommodate various audio and video devices such as video switchers, power amps, and power conditioners. Typical applications are in music, pro audio/video and many more markets.

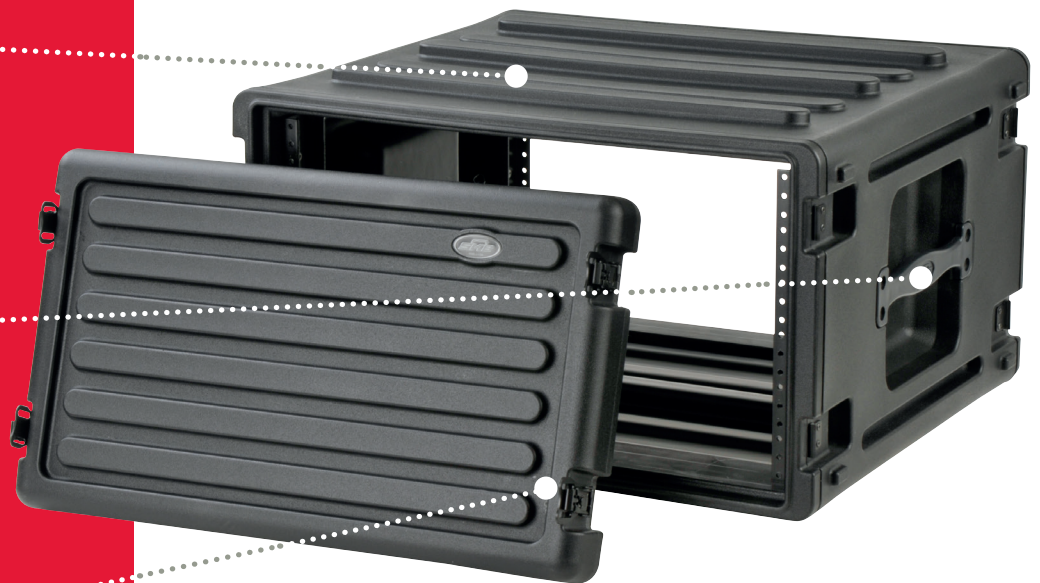
Interlocking stacking ribs for secure transport



Heavy-duty flushmount handles



Recessed butterfly latches for extra durability



Rackable Depth	Available Height Units	Waterproof (IP67)	Water resistant	Rated Duty	Wheels integrated	Military Certified	Shock Absorbed	Stackable	Rack removable
17.6"	2-12U		✓	Medium				✓	



SPECIAL FEATURES

- ✓ Roto-molded for extra strength & durability for maximum protection of your gear
- ✓ Front & rear covers for fast, easy & convenient access
- ✓ Covers are gasket sealed to keep water out & your gear dry
- ✓ Interlocking stacking ribs for secure transport
- ✓ New size bar cover design
- ✓ Recessed latches for extra durability
- ✓ Heavy-duty flushmount handles
- ✓ Rackmount hardware included for secure mounting to front and/or rear
- ✓ Lifetime warranty

	Rackable Depth (mm)	Available Height Units	Exterior Dimensions L X W X H (mm)	Product weight (kg)	Front Lid Depth (mm)	Back Lid Depth (mm)	Caster kit	Integrated wheels
1SKB-R2U	447	2U	610x569x158	4,9	32	32	Opt	No
1SKB-R3U	447	3U	610x569x193	5,5	32	32	Opt	No
1SKB-R4U	447	4U	610x569x246	6,5	32	32	Opt	No
1SKB-R6U	447	6U	610x569x335	8,4	32	32	Opt	No
1SKB-R8U	447	8U	610x569x424	10,1	32	32	Opt	No
1SKB-R10U	447	10U	610x569x513	11,5	32	32	Opt	No
1SKB-R12U	447	12U	610x569x610	13,2	32	32	Opt	No